

QUIZ:

Unenhanced Brain Computerised Axial Tomographic (CAT) scan quiz

Answers on page 41

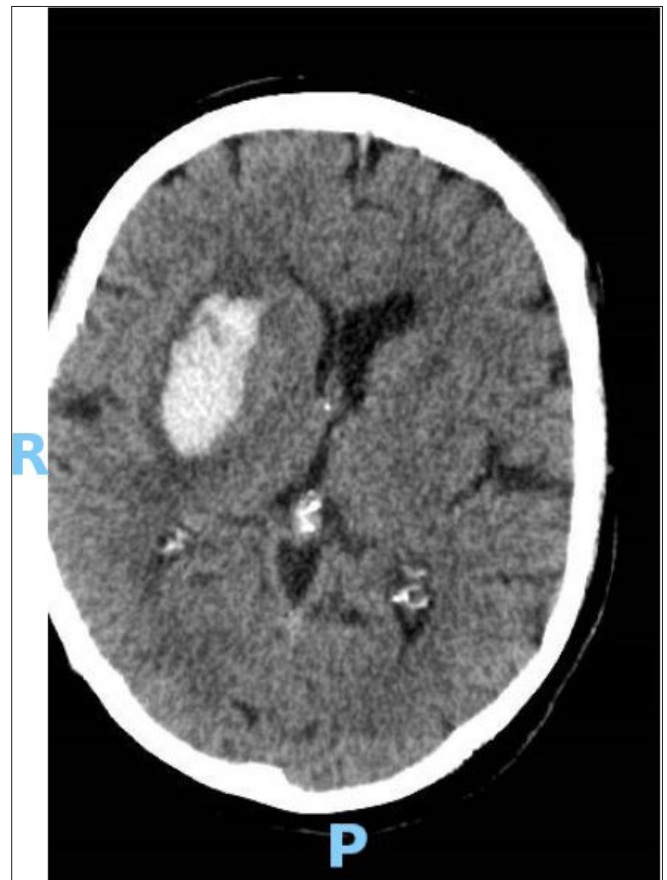


Scan 1

A right-handed 73-year-old case, usually well and living alone, was found on the floor by a friend with dense right sided weakness and dysphasia.

Figure 1 above shows her brain CAT scan on admission to hospital.

1. Describe two findings on the CAT scan.
2. What is the diagnosis?
3. Give a brief outline of the management of this patient in the first 24 hours.



Scan 2

An 89-year-old ex-smoker with a long-standing history of hypertension presented to hospital with left sided weakness of sudden onset and a fall

Figure 2 shows his brain CAT scan on admission to hospital

1. Describe the findings on this scan
2. What is the diagnosis?
3. How do you manage this patient in the first 24 hours?